



MEMO

To: South East Staff, South East Local Leagues, South East Clubs
From: South East Manager
Date: 18 February 2021
Re: 2021 South East Female Competitions Update 1

This Memo is to provide an update on the QRL's South East (SE) preparations for the 2021 Female Competitions.

COMPETITIONS

OPERATIONS MANUAL & QUICK REFERENCE GUIDE

The Operations Manual and Quick Reference Guide for 2021 can be found here → bit.ly/QRLSEClubResources

TEAM NOMINATION PROCESS

Team nominations must be completed through the following link and close **midnight 12th March** → <http://bit.ly/21QRLSEFemaleCompsNoms>

Note: Once team nominations are finalised, we will ask each Club to complete their contact distribution list for each team (i.e. Manager, Coach, Trainer) through a separate link.

AGE GROUPS – JUNIORS

The confirmed junior age groups are U12s, U14s, U16s, U18s for the 2021 season. Each age group includes a 15-month registration window via application when registering.

15-Month Registration Guide				
Year of Birth	U12s	U14s	U16s	U18s
2008 (Born between October and December)	✓	X	X	X
2006 (Born between October and December)	X	✓	X	X
2004 (Born between October and December)	X	X	✓	X
2002 (Born between October and December)	X	X	X	✓

Note: 15-month registration process will be listed as "18-month" on playrugbyleague.com when registering. Please ensure players check this box and complete under the above guidelines. If this process is not followed, this will delay the players' application with an alternate process to be provided in the new year.

DRAW

The Region will be providing a skeleton home & away draw (no match detail specifics) with the inclusion of byes. Please note that the home team may be required to play at the closest local venue due to club availability and match officials.

CLUB HOSTING EXCLUSION & DRAW REQUEST DATES

Please submit any Club hosting exclusion & draw request dates here → bit.ly/21QRLSEFemaleCompsHosting

Note: a skeleton draw cannot be completed until all special requests to host a round are received.

SEASON PLANNER

The SE season planner can be found on bit.ly/21QRLSESeason.

Note: this is at 16th February 2021.

TRIALS

Trials will only be allowed where it displays “Trial upon request” on the [Season Planner](#).

Please follow the below steps when applying for a trial:

1. **Download** a copy of the form here → bit.ly/QRLEClubResources
2. Complete all applicable details.
3. Send completed form to your Local League Office contact.
4. Once all approvals have been met, you will be notified via email.

AFFILIATIONS

The Region has implemented an affiliation model for the female competitions in 2021. Each BHP Club will be required to affiliate with SEQW Premiership clubs. Each BHP club will nominate players to their affiliate SEQW Premiership club. This arrangement continues through all levels of female competitions.

All clubs are required to complete affiliation documents no matter which division they are entering. Affiliation templates can be found here → bit.ly/QRLEClubResources

ALLOCATED JUNIOR FEMALE CLUBS

After community feedback during the 2020 season, it was identified that each local league across South East Queensland would implement allocated junior female clubs. This is to promote sustainability and a pathway from juniors through to SEQW Premiership, BHP Premiership and NRLW.

Each Local League board assessed each female club against the minimum level of standards criteria for female participants. You can find the criteria here → bit.ly/QRLEClubResources

Each Local League board has endorsed the following allocated junior female clubs:

RUGBY LEAGUE BRISBANE		RUGBY LEAGUE GOLD COAST		RUGBY LEAGUE IPSWICH
Albany Creek	Pine Central	Beaudesert	Nerang	Brothers
Aspley	Redlands	Burleigh	Ormeau	Goodna
Beenleigh	Souths Acacia Ridge	Jimboomba	Parkwood	Laidley
Capalaba	Waterford	Mudgeeraba	Runaway Bay	Norths
East Tigers	West Arana			Redbank
Logan Brothers	Wynnum Manly			

PROGRAMS

FEMALE RISE

The Region is currently taking Player applications for our first ever female RISE program in the U13s, U14s, U15s age groups.

You can read **more** information here → <https://bit.ly/QRLMRRise>

Players can **apply** via this link → <https://bit.ly/3tOVg3x>

COMMUNICATION PROCESSES

CLUB UPDATE MEETING

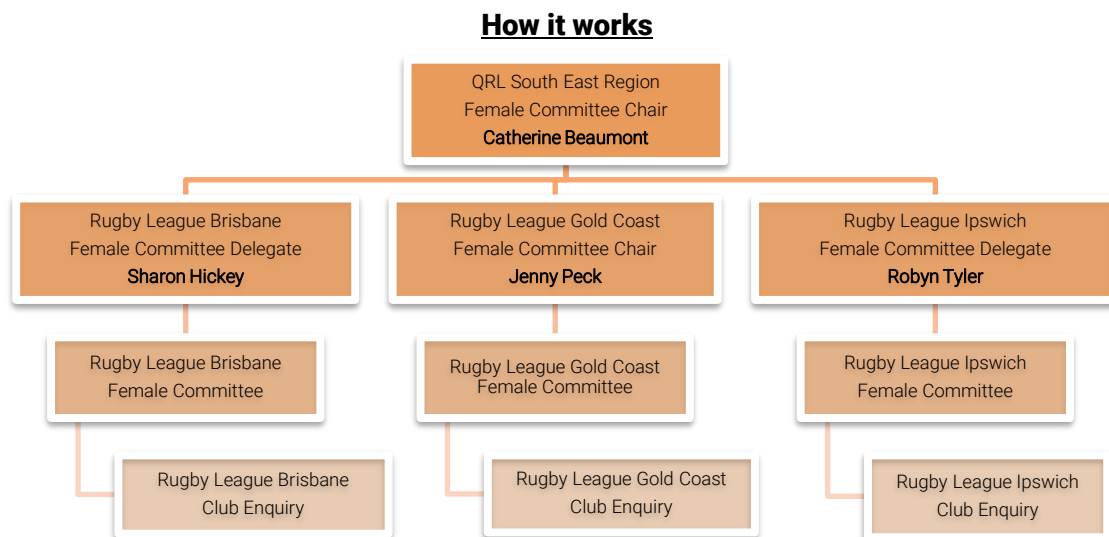
The Region will be hosting a 30-minute club update meeting on **Thursday 4th March at 6:00pm**. We will use this time to address any competition or season queries.

You can **join** the meeting here → <http://bit.ly/3dnMUtl>

ENQUIRY FLOWCHART

In 2021 the region will adopt a female competition committee to allow streamlined communication on issues effecting the female competitions. This committee allows each Local League a direct line to have an enquiry dealt with.

E.g. If a Brisbane club has an issue or idea, they will take it to the Brisbane Local League female committee who will collate the information to get a resolution.



Yours sincerely,

Adam Vanzanten

Manager – QRL South East